

Effizienz:

100 Lumen/Watt

Farbwiedergabeindex:

CRI: 82,1

Farbtemperatur:

2907 K

Lichtstrom: 2341 lm

Lichtstärke: 794 cd

Leistung: 23,4 W

Power-Faktor: 0,61

2 PLANES



Produktbezeichnung:

clip on 24W mit CCT 3000k

Datum und Uhrzeit:

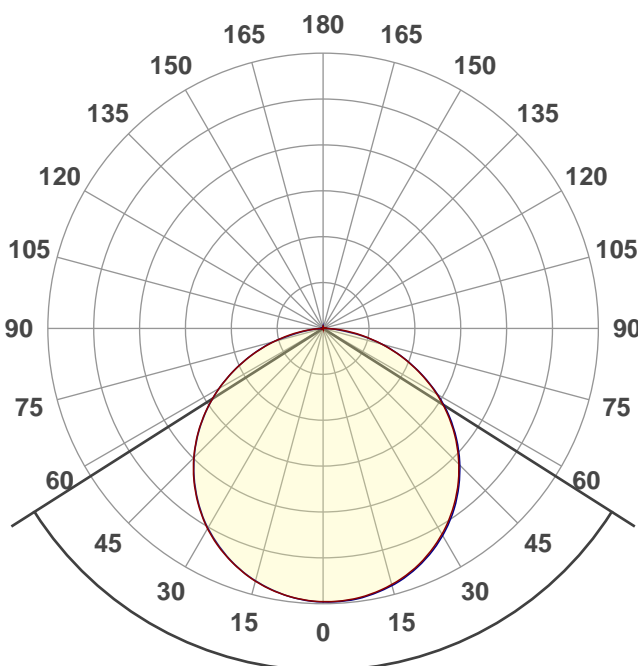
09.04.2019 11:32:16

Artikelnummer:

LED Decken-Wandleuchte IP20

Zusatzinformationen:

EDHL19



Abstrahlwinkel

115,1°

Farbe

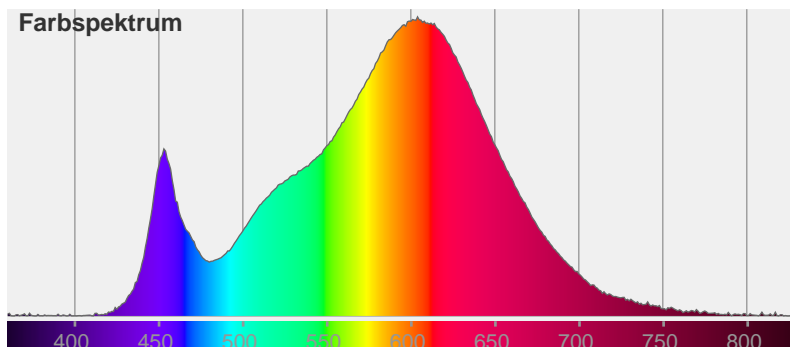


CIE1931

x: 0,441

y: 0,401

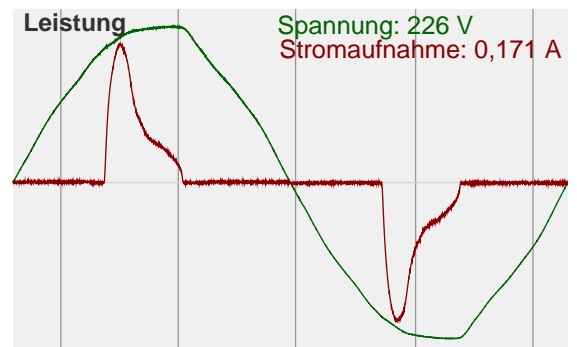
Farbspektrum

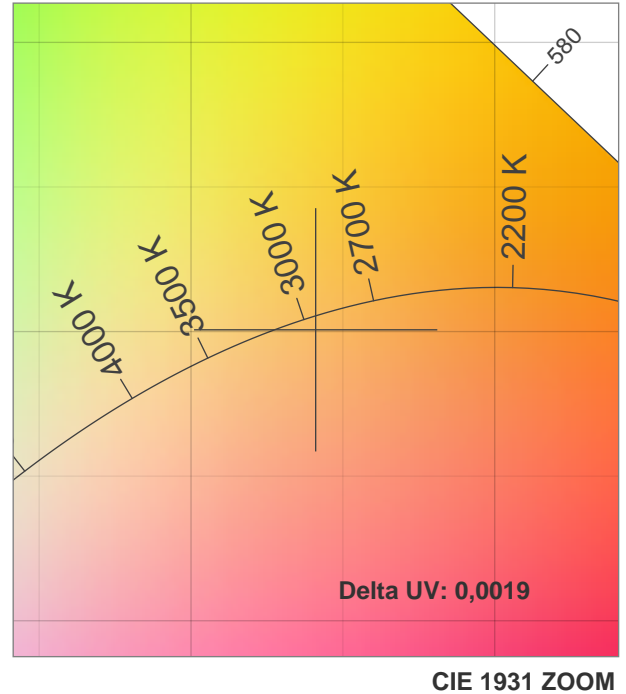
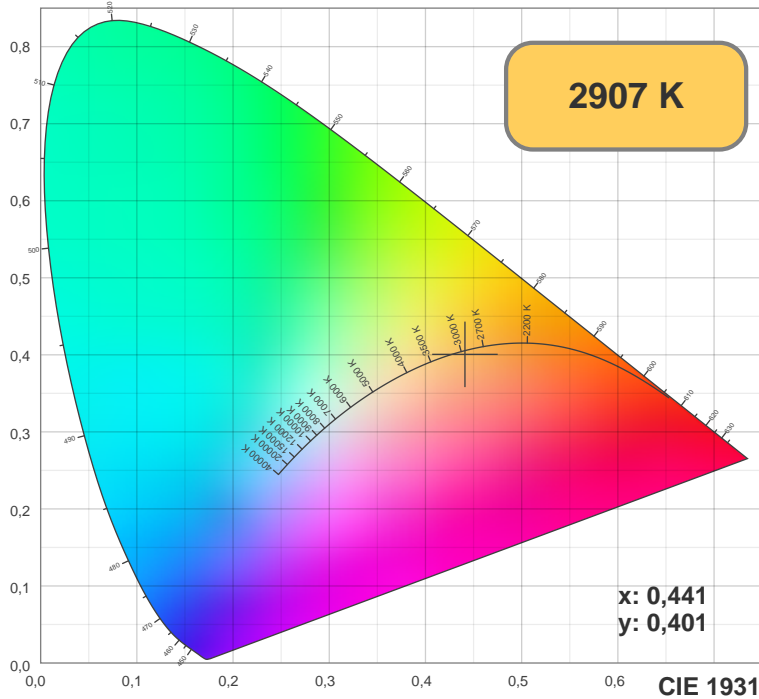


Leistung

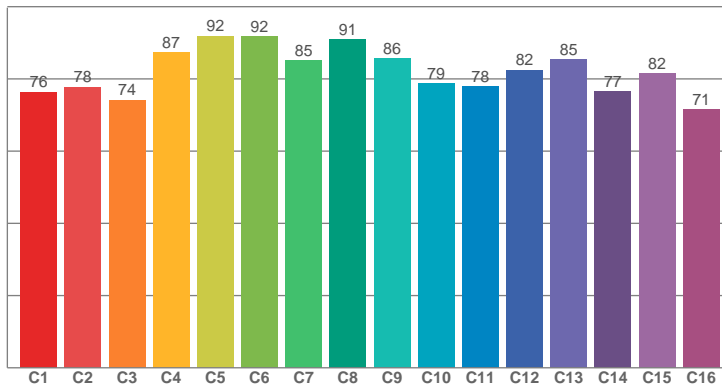
Spannung: 226 V

Stromaufnahme: 0,171 A

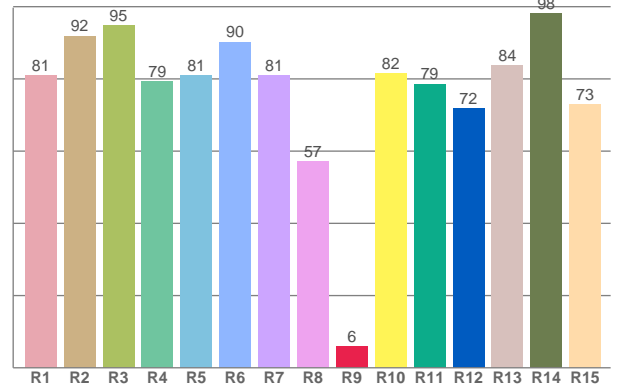




TM30: 82,0



CRI: 82,1 (R1-R8)



CRI R values, only R1-R8 are used to calculate final CRI value

R1	R2	R3	R4	R5	R6	R7	R8	R9	R10	R11	R12	R13	R14	R15
80,91	91,90	94,90	79,34	81,05	90,22	80,91	57,18	5,84	81,54	78,62	71,83	83,69	98,06	73,00

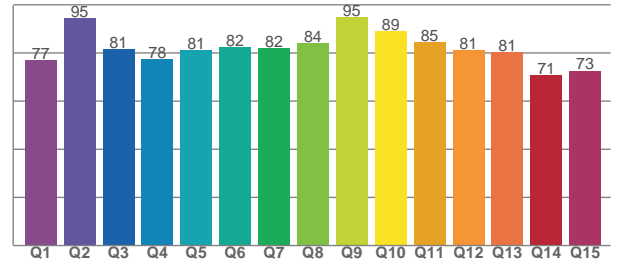
TM30 C values, 16 binned values out of total of 99 C values

C1	C2	C3	C4	C5	C6	C7	C8	C9	C10	C11	C12	C13	C14	C15	C16
76,43	77,78	74,21	87,38	91,87	91,76	85,05	90,98	85,75	78,78	78,01	82,49	85,40	76,55	81,57	71,50

CQS Q values

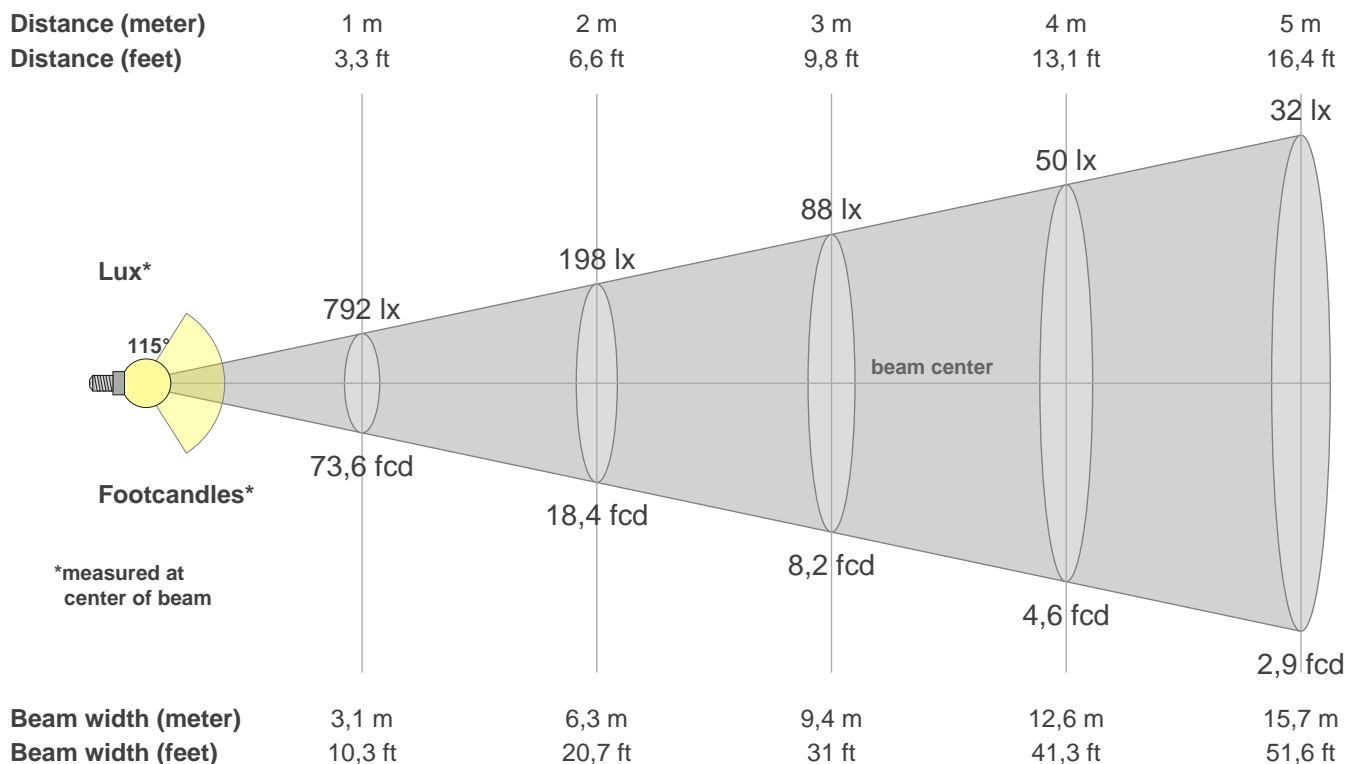
Q1	Q2	Q3	Q4	Q5	Q6	Q7	Q8	Q9	Q10	Q11	Q12	Q13	Q14	Q15
77,14	94,54	81,43	77,52	81,21	82,46	81,84	83,97	94,74	88,92	84,61	81,26	80,51	70,73	72,69

CQS: 81,0



Color parameters

CCT	CRI	CRI R9	TM30 Rf	TM30 Rg	CQS	x	y	u	v	Duv
2907 K	82,1	5,8	82,0	95,7	81,0	0,4	0,4	0,3	0,3	-0,0019



Intensities in 0° c-plane

0°	5°	10°	15°	20°	25°	30°	35°	40°	45°	50°	55°	60°	65°	70°	75°	80°	85°	90°	95°
792	791	783	769	748	722	689	650	606	556	502	444	381	313	245	177	112	55	12	0
100%	100%	99%	97%	94%	91%	87%	82%	76%	70%	63%	56%	48%	40%	31%	22%	14%	7%	1%	0%

Intensities in 90° c-plane

0°	5°	10°	15°	20°	25°	30°	35°	40°	45°	50°	55°	60°	65°	70°	75°	80°	85°	90°	95°
792	792	785	772	752	726	693	655	610	561	507	448	384	315	247	177	104	42	10	0
100%	100%	99%	97%	95%	92%	87%	83%	77%	71%	64%	57%	48%	40%	31%	22%	13%	5%	1%	0%

Intensities in 180° c-plane

0°	5°	10°	15°	20°	25°	30°	35°	40°	45°	50°	55°	60°	65°	70°	75°	80°	85°	90°	95°
792	787	776	759	735	705	670	629	582	530	474	414	349	282	215	148	87	35	4	0
100%	99%	98%	96%	93%	89%	85%	79%	73%	67%	60%	52%	44%	36%	27%	19%	11%	4%	1%	0%

Intensities in 270° c-plane

0°	5°	10°	15°	20°	25°	30°	35°	40°	45°	50°	55°	60°	65°	70°	75°	80°	85°	90°	95°
792	788	775	757	733	703	668	627	580	529	472	412	348	282	215	148	74	27	3	0
100%	99%	98%	96%	93%	89%	84%	79%	73%	67%	60%	52%	44%	36%	27%	19%	9%	3%	0%	0%

Beam angle 50%	Field angle 10%	Cutoff angle 2,5%	Intensity ratio in 120° cone	Intensity ratio in 90° cone
115,1°	162,4°	174,9°	77,9%	52,6%